

LEE ESTATES PLAT V

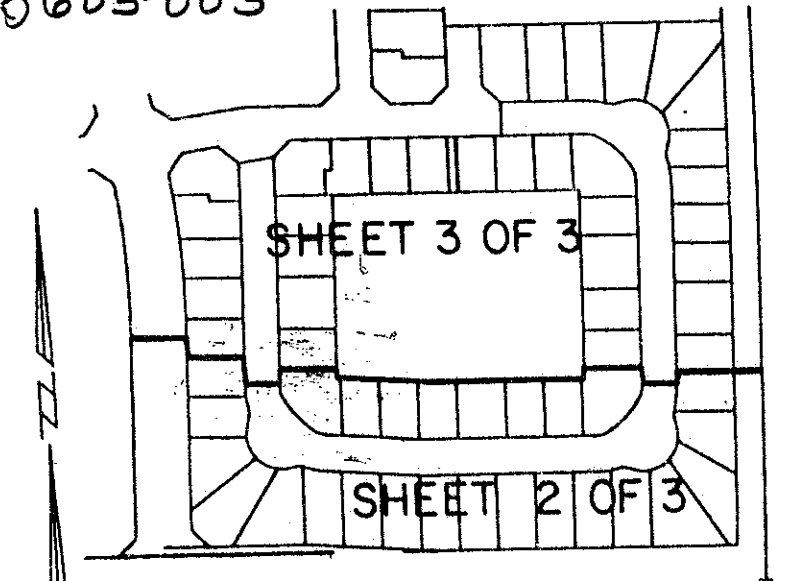
A PLANNED UNIT DEVELOPMENT
LYING IN SECTION 35, TOWNSHIP 44 SOUTH, RANGE 42 EAST,
PALM BEACH COUNTY, FLORIDA

SHEET 3 OF 3

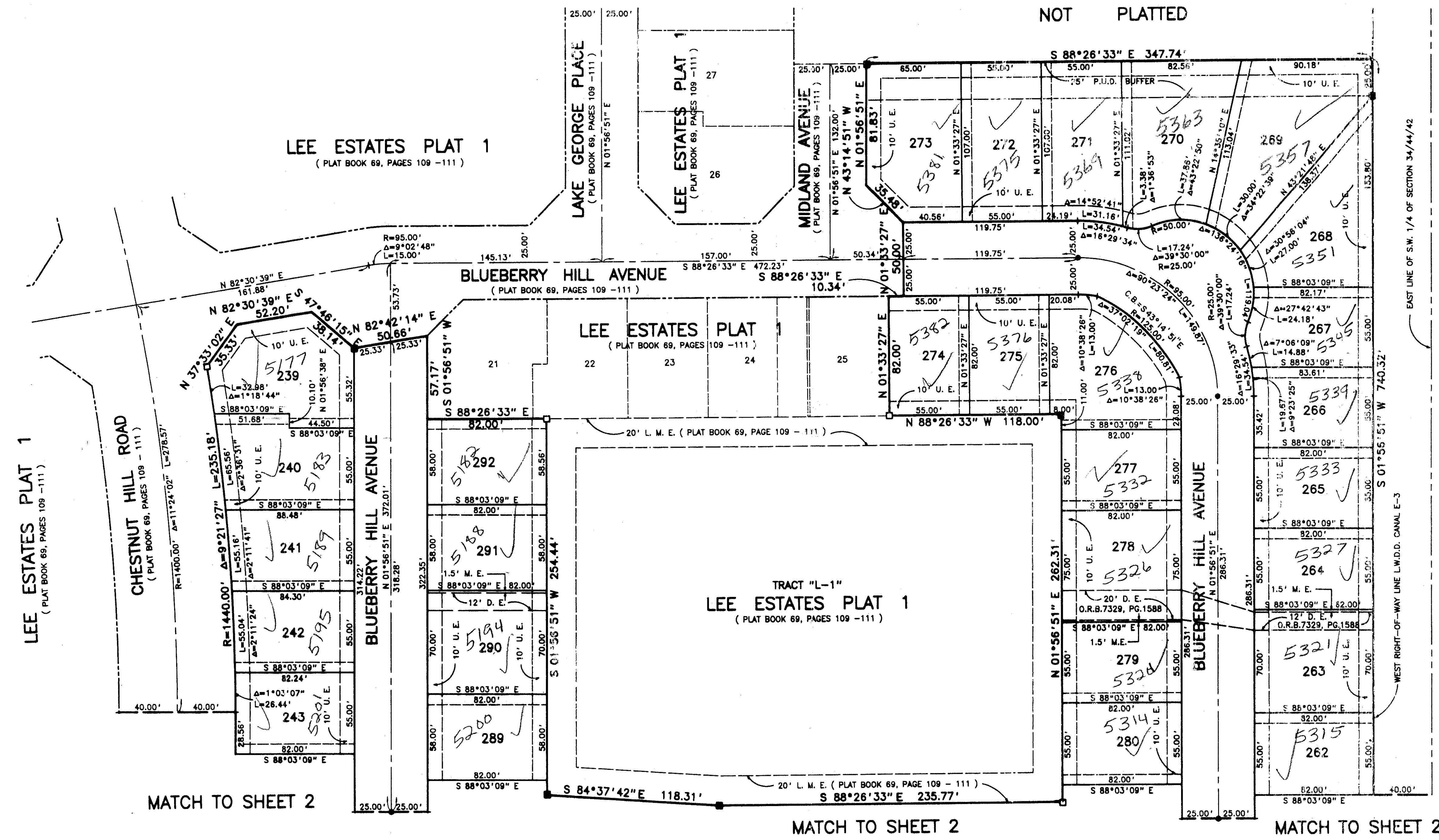
JUNE, 1994

0605-005

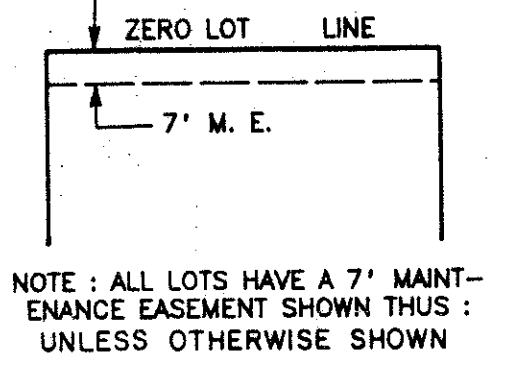
61



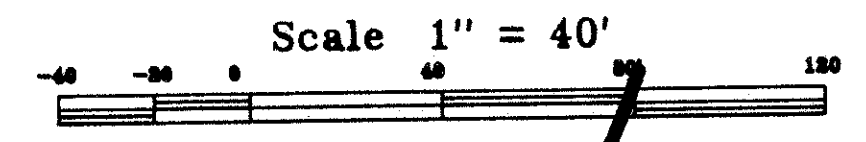
STATE OF FLORIDA
COUNTY OF PALM BEACH
This Plat was filed for record at _____
M. this _____ day of _____ 19____
and duly recorded in Plat Book No. _____
on Page _____
Dorothy H. Wilkan, Clerk of the Circuit Court
By _____ D.C.



PET. 90-16
5/2/2/I



REVISIONS
NO. 1
DATE 7/3
BY B
REASON FOR CHANGE 33463
35/4/94 SAMS TAZ-349



73/61

0605-005

Landmark Surveying & Mapping Inc.
1850 FOREST HILL BOULEVARD
PH. (407)433-5405 SUITE 100 W.P.B. FLORIDA

LEE ESTATES PLAT V